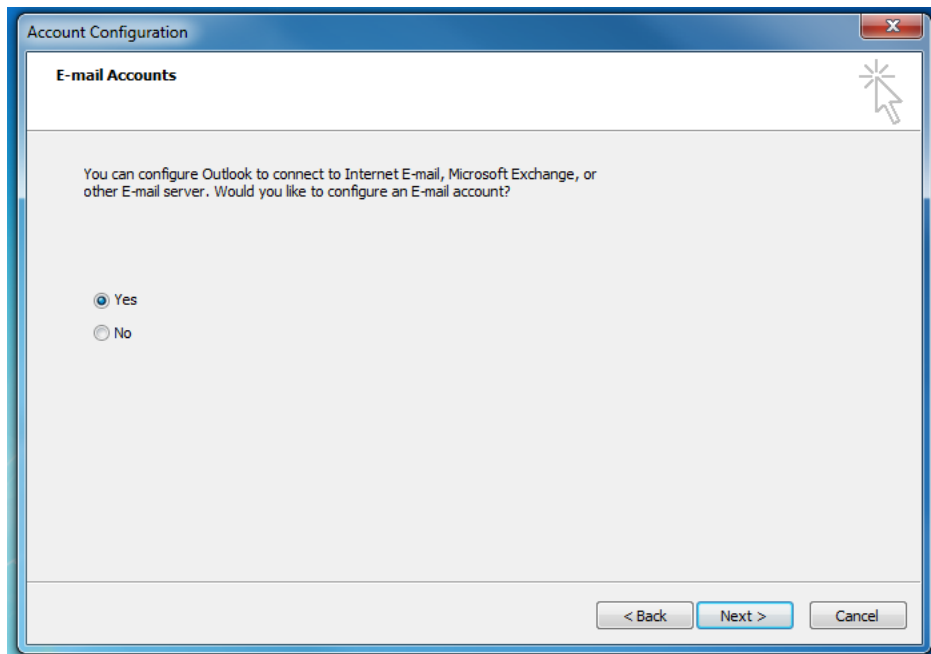




1. Buka Microsoft Outlook



2. Kemudian tandakan Yes, dan klik "Next".

Add New Account

Auto Account Setup
Click Next to connect to the mail server and automatically configure your account settings.

E-mail Account

Your Name:
Example: Ellen Adams

E-mail Address:
Example: ellen@contoso.com

Password:

Retype Password:
Type the password your Internet service provider has given you.

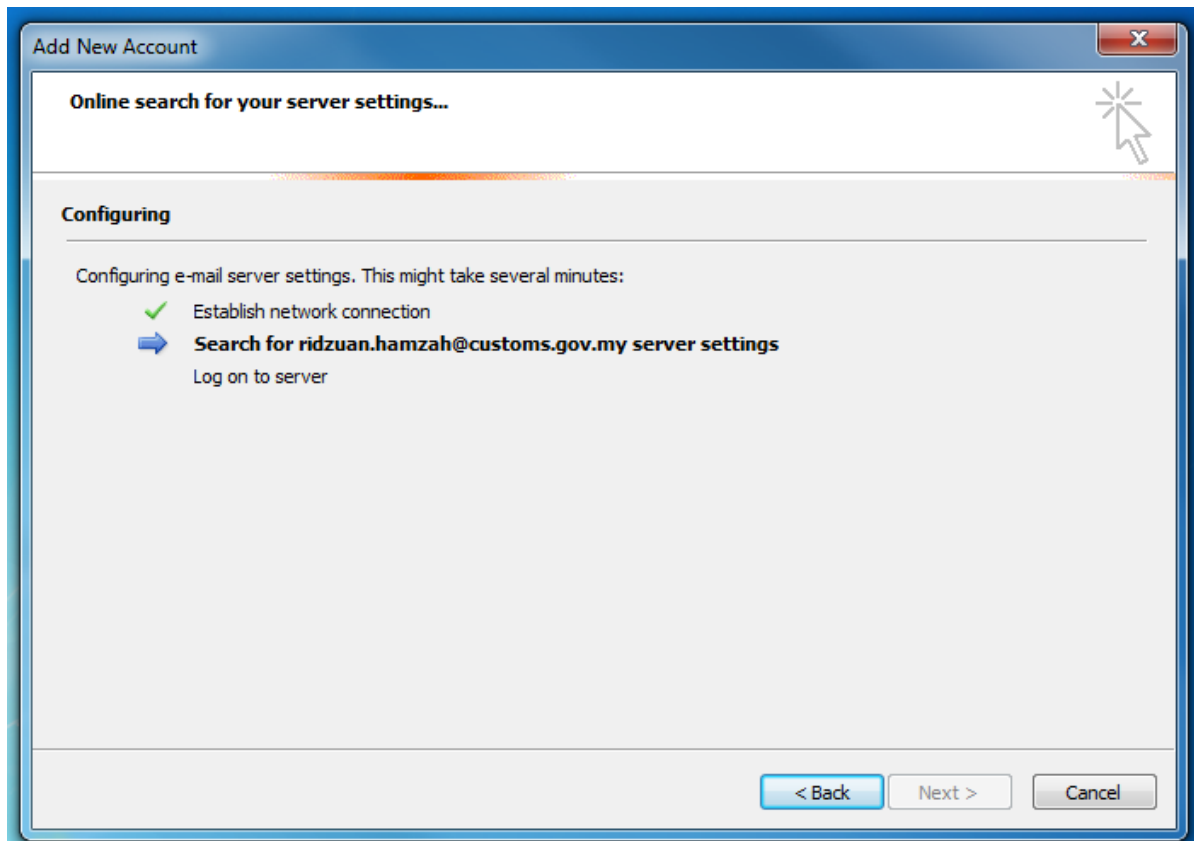
Text Messaging (SMS)

Manually configure server settings or additional server types

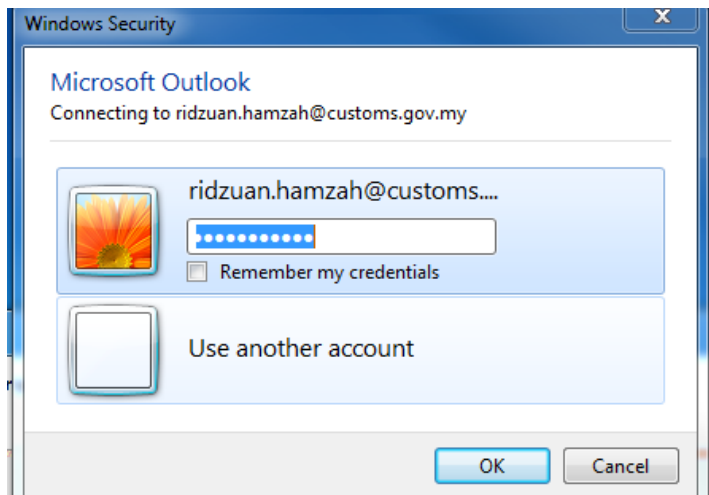
< Back Next > Cancel

3. Masukkan maklumat e-mel anda seperti berikut :
 - a. NAMA PENUH :
 - b. ALAMAT E-MEL :
 - c. PASSWORD :

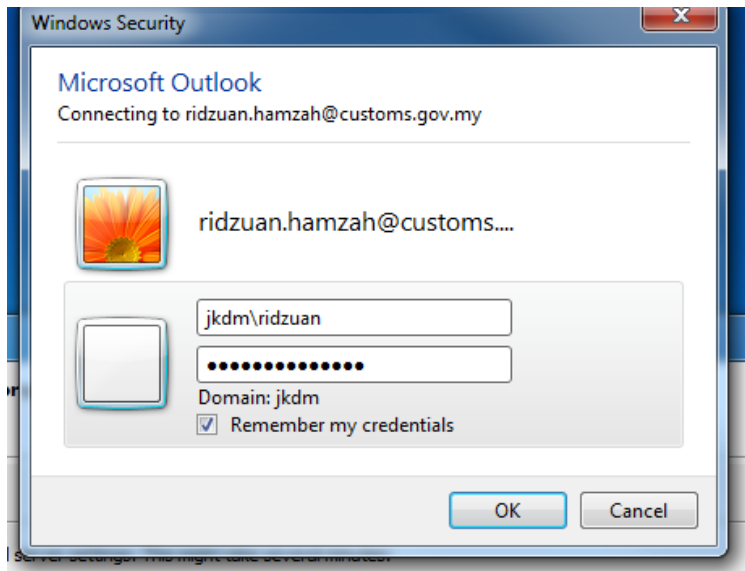
4. Kemudian tekan "Next"



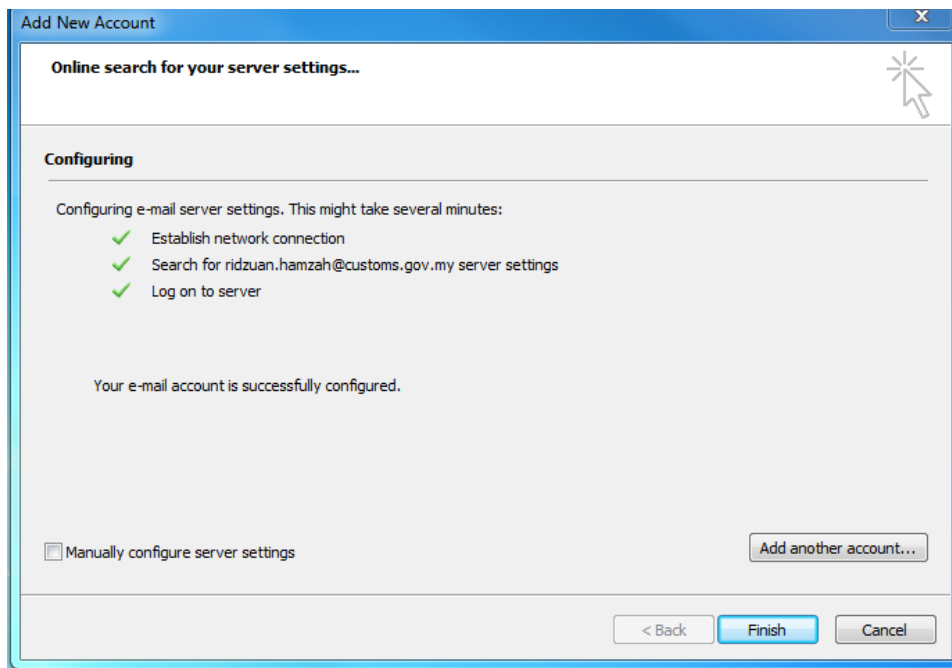
5. Microsoft Outlook akan memuat turun tetapan daripada server. Proses ini akan mengambil masa beberapa minit.



6. Popup untuk login akan keluar. Klik pada Use another account.

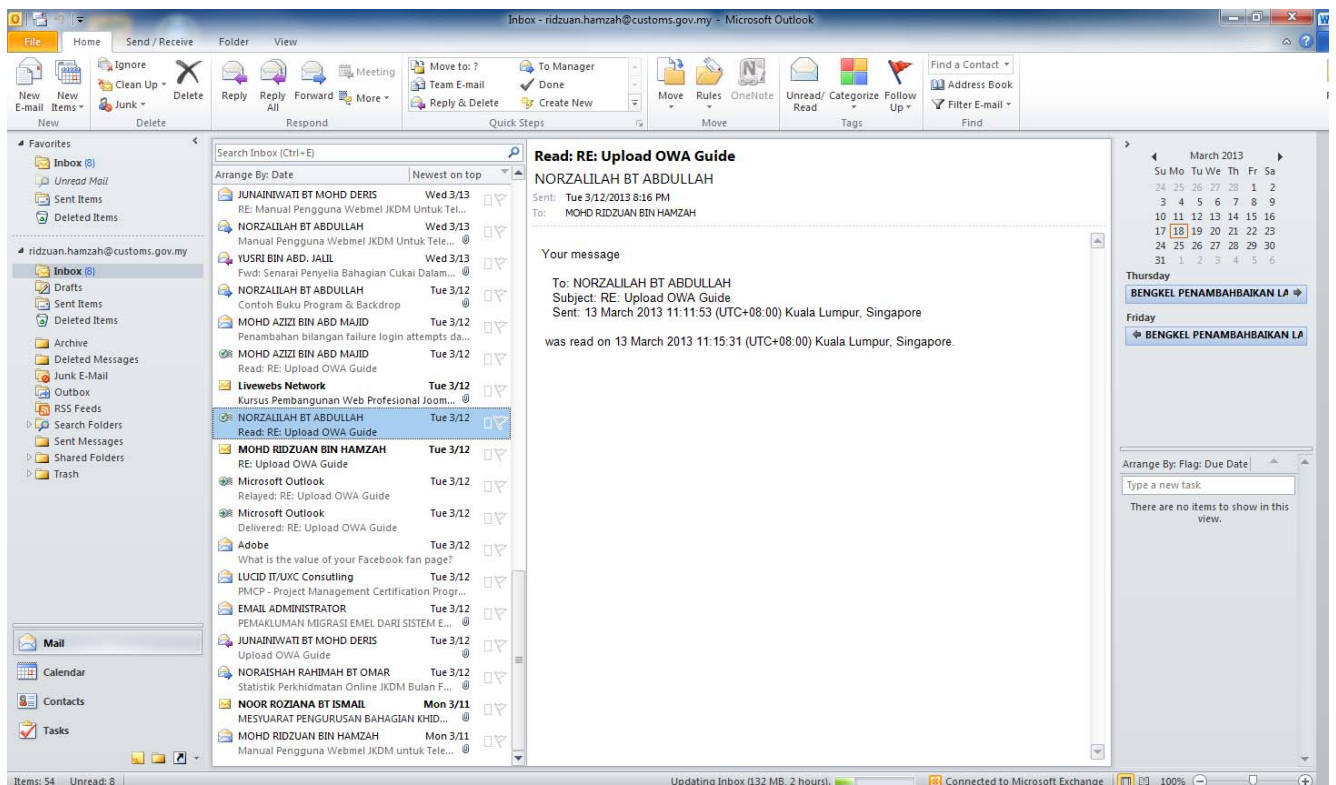
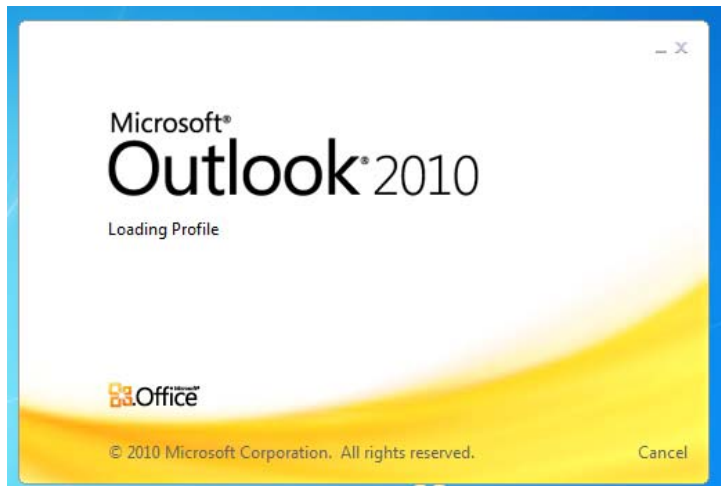


7. Kemudian masukkan maklumat login seperti berikut :-
 - a. USERNAME : **jkdm\kata_nama**
 - b. PASSWORD.



8. Tahniah, anda telah Berjaya. Klik "Finish".

Manual Pengguna Tetap Emel di Microsoft Outlook 2010 (versi 1.0)



9. Microsoft Outlook akan mula memuat turun data-data e-mel anda kedalam komputer.